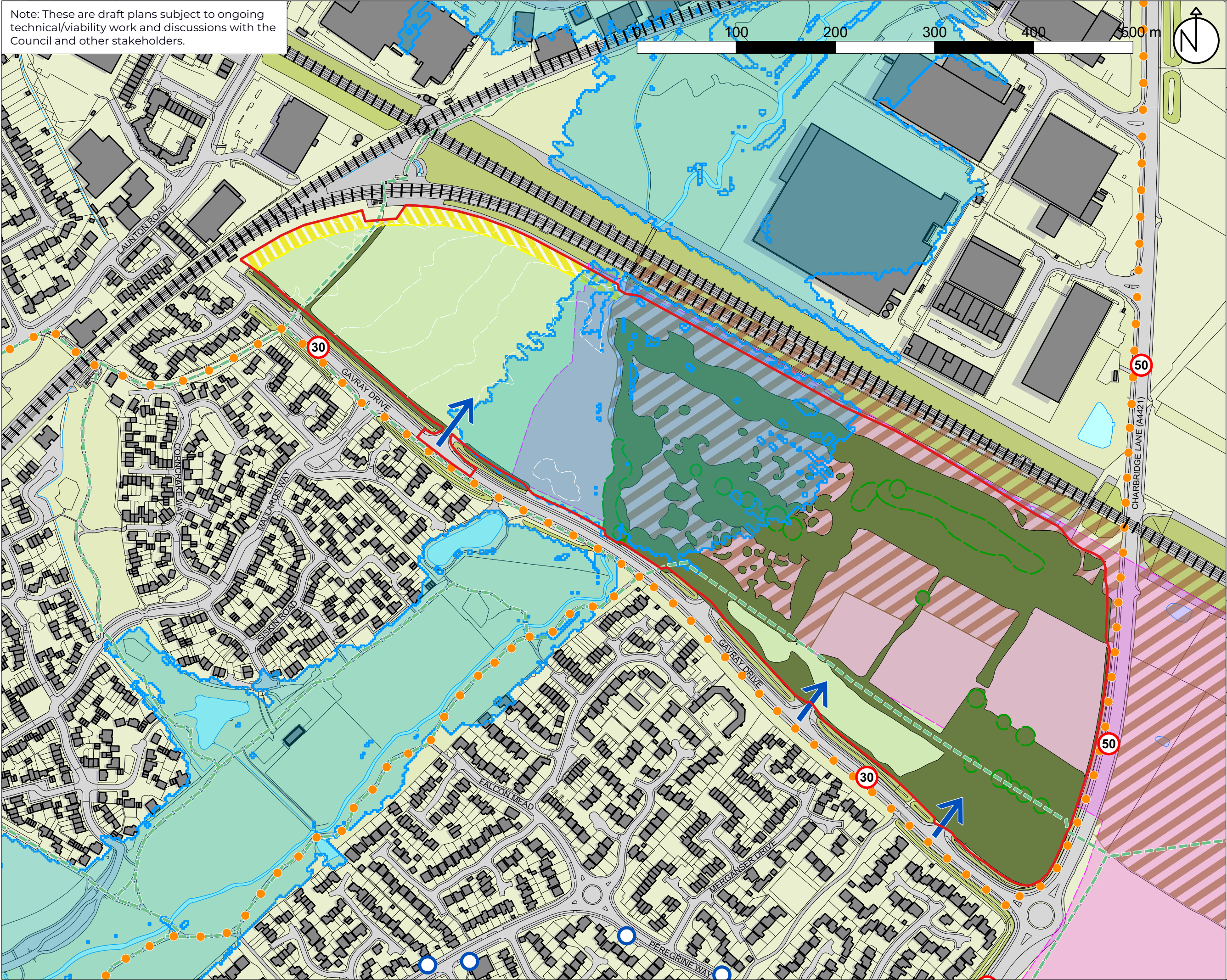


Note: These are draft plans subject to ongoing technical/viability work and discussions with the Council and other stakeholders.



Do not scale from this drawing.

This drawing is for planning purposes only. It is not intended to be used for construction purposes. The accuracy of this drawing may be reliant upon survey information provided by third parties. Whilst all reasonable efforts are used to ensure drawings are accurate, edge Placemaking Group Ltd accept no responsibility or liability for any reliance placed on, or use of, this plan by anyone for purposes other than those stated above or for errors arising from third party information.

This drawing and the works depicted are the copyright of edge Placemaking Group Ltd.

DISCUSSION

- Site boundary (22.55ha)
- Existing site access point
- Existing trees/hedgerows/scrub to be retained (where possible)
- TPOs
- Conservation Target Area
- Local Wildlife site
- 100yr + climate change flood extent
- Existing Public Rights of Way
- Cycle routes
- Railway line
- Indicative noise buffer from railway
- Bus stops

Rev.	Date	Description
Land north of Gavray Drive BICESTER		
Constraints Plan		
Job ref: 239	Drawing number: P01	Revision: -
Scale: 1:3,500 @ A3		Date: May 2020



URBAN DESIGN

part of  
**edge Placemaking Group Ltd**

Company Reg No 11447550    VAT No 299072069

Suite 2  
7 Buttermarket  
Thame  
Oxfordshire  
OX9 3EW

 01865 522395  
 enquiries@edgeUD.co.uk  
 www.edgeUD.co.uk